



GAT MONTHLY MEMBERSHIP PROGRESS REPORT

Results as of: 3/31/2024

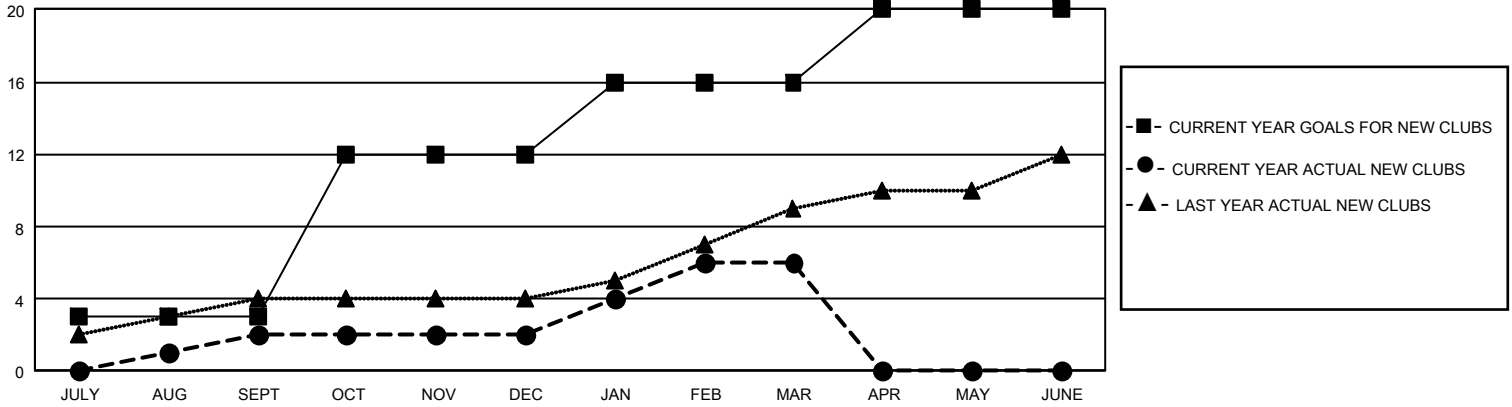
GMT Constitutional Area 2, Group B

REPORT DOES NOT INCLUDE CLUBS IN UNDISTRICTED AREAS.

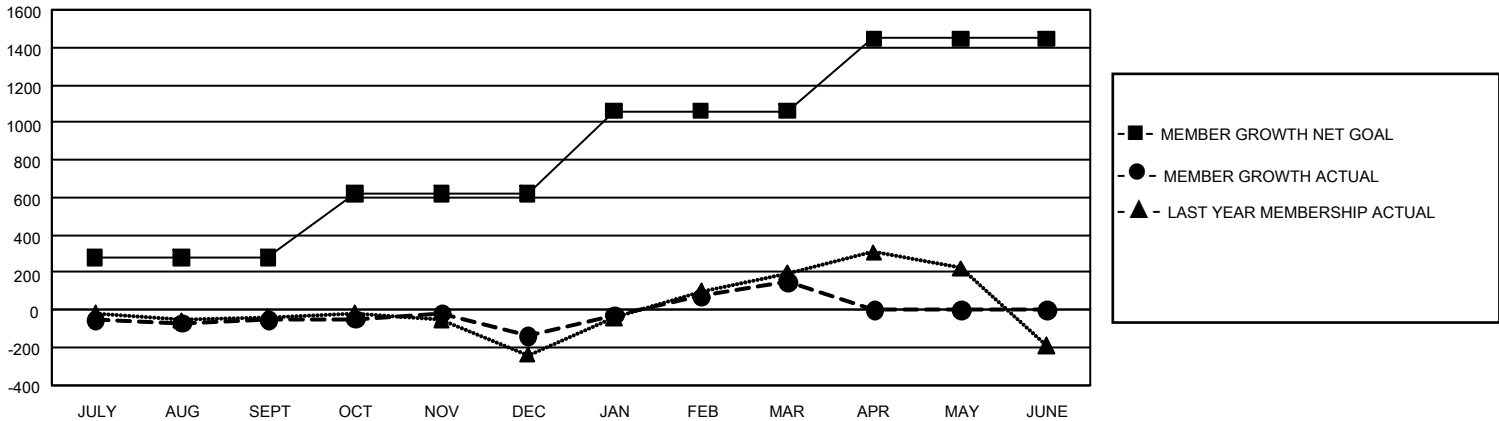
Clubs			
RESULTS FOR 2023-2024			
QUARTER	NEW CLUB GOAL	NEW CLUBS	DROPPED CLUBS
JULY/AUG/SEPT	9	2	1
OCT/NOV/DEC	27	0	3
JAN/FEB/MAR	12	4	1
APR/MAY/JUNE	12	0	0

Members			
RESULTS FOR 2023-2024			
QUARTER	MEMBER GROWTH NET GOAL	MEMBER GROWTH ACTUAL	DROPPED MEMBERS ACTUAL (including transfers)
JULY/AUG/SEPT	281	394	398
OCT/NOV/DEC	339	621	652
JAN/FEB/MAR	441	701	356
APR/MAY/JUNE	385	0	0

GOALS AND ACTUAL NEW CLUBS CUMULATIVE



GOALS AND ACTUAL MEMBERS CUMULATIVE



DROPPED CLUBS: 5 DROPPED MEMBERS DECEASED 195 CLUB CANCELLED 14 OTHER 1,197 TOTAL 1,406	442 CLUBS OF 686 ADDED 1 OR MORE NEW MEMBERS	GENDER DISTRIBUTION MALE 9,873 (61.42%) FEMALE 6,196 (38.55%) NON BINARY 0 (0.00%) PREFER NOT TO ANSWER 5 (0.03%)
	CLICK HERE FOR CUMULATIVE MEMBERSHIP DATA	TOTAL FAMILY UNIT MEMBERS 3,048 FAMILY MEMBERS PAYING HALF DUES 1,571